



# 20ft Used Dry Container



## CLASSIFICATION

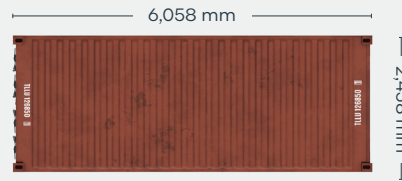
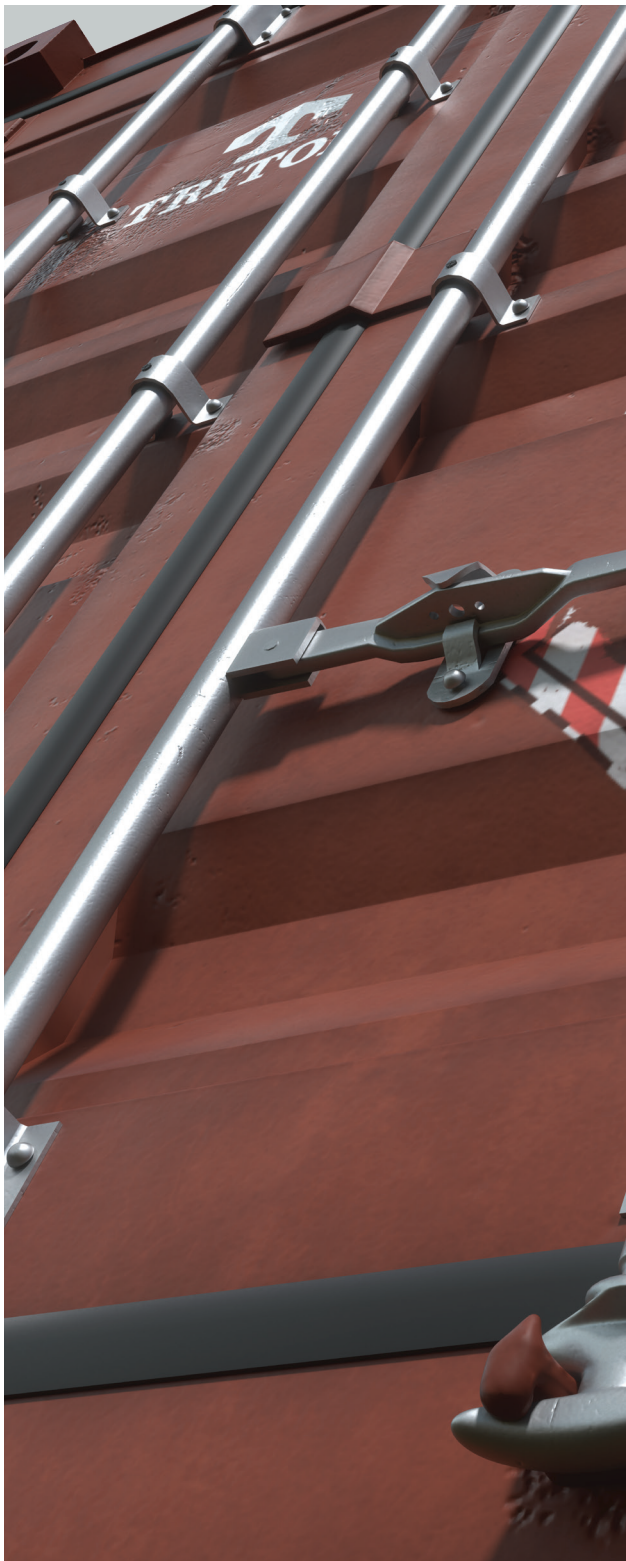
### For Sale: Used

Available via Triton's global network of supply locations.

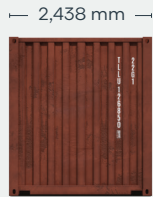


## FEATURES

- Available in a range of conditions to suit all needs, from cargo transportation to secure domestic storage
- Generally 11-15 years old when retired from service
- Constructed from rugged corten steel
- Durable and secure, with vents to allow airflow
- Resistant to damage and corrosion
- A variety of options available
- Incredibly versatile and suitable for customers to modify into a wide range of applications
- Available globally
- Backed up by Triton's global network of supply locations and dedicated sales and support teams
- Also available for Direct Delivery to buyer's facilities, providing significant cost savings on transport



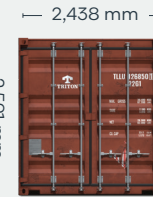
CONTAINER ROOF



CONTAINER FRONT



CONTAINER SIDE



CONTAINER REAR

## DIMENSIONS (METRIC/IMPERIAL)

### EXTERNAL DIMENSIONS

<b>Length</b>	6,058 mm	19' 10.5"
<b>Width</b>	2,438 mm	8' 0.0"
<b>Height</b>	2,591 mm	8' 6.0"

### INTERNAL DIMENSIONS

<b>Length</b>	5,898 mm	19' 4.2"
<b>Width</b>	2,352 mm	7' 8.6"
<b>Height</b>	2,393 mm	7' 10.2"

### DOOR OPENING

<b>Width</b>	2,340 mm	7' 8.1"
<b>Height</b>	2,280 mm	7' 5.8"

### CAPACITY & WEIGHTS

<b>Inside Cubic Capacity</b>	33.2 m <sup>3</sup>	1172 ft <sup>3</sup>
<b>Max Gross</b>	30,480 kg	67,200 lbs
<b>Payload</b>	28,090–28,580 kg	61,931–63,011 lbs
<b>Tare</b>	1,900–2,390 kg	4,189–5,269 lbs

**NOTE:** The dimensions and door openings of all containers correspond to ISO standards. However, due to production tolerances, a difference in measurement is possible.

**DISCLAIMER:** Every effort is made to ensure this information is accurate, however Triton does not assume any liability for the accuracy of the information and content provided in marketing or information materials, or for the consequences resulting from using the information and content provided. Triton does not guarantee or claim that said information and content is exhaustive. Claims as to the exhaustive nature of said information and content are excluded. The information and content is only provided for advertising purposes and is non-binding. No explicit or implied warranties or guarantees are made. The container displayed only represents a sample of the entire fleet.

The following items are registered or unregistered service marks in the United States and/or foreign jurisdictions pursuant to applicable intellectual property law and are the property of Triton International Limited and its subsidiaries: Triton® and TAL®.