



TRITON

OUR SECTORS

Storage

Triton Containers can be used to securely store equipment, excess inventory and more for short or long periods.



OUR SECTORS – STORAGE

Store items with confidence

Once retired from marine use and purchased by our customers, Triton ISO Cargo Containers can be painted, refurbished, and when required, modified for service in the portable storage industry.

Containers where our customers need them

We are a valued partner to companies operating within the portable and domestic storage industry. Our containers offer a cost-effective, durable, secure, on-site alternative to traditional brick and mortar storage facilities. They are available in a range of conditions to meet our customers' unique storage needs and budgets, including "Cargoworthy Premium", "Cargoworthy Standard", "IICL New", "IICL Used", and "As-Is".

The largest global seller of used containers

Our extensive global operating infrastructure enables us to deliver unrivaled container supply capabilities to our customers; our scale allows us to operate with the lowest cost ratios in the industry.

Safe and secure storage solutions

Container storage is a valuable asset to many businesses, from manufacturing to construction, and the retail sector. Triton 20ft and 40ft Double Door Containers, also commonly known as "Tunnel Containers", are increasingly used for this purpose. They have two secure points of access, as such, it is possible to divide them into two separate storage areas using partitions. This feature often makes them more space and cost-effective than purchasing individual standard units of the same capacity.

Other popular Triton products include Tank Containers, Refrigerated Containers, and other Dry Containers with standard lengths of 8ft, 10ft, and 45ft.

The NPSA

Triton Container Sales is a proud charter member of the National Portable Storage Association in North America (NPSA). NPSA is a non-profit membership association dedicated to the advancement of the portable storage industry.

PLEASE NOTE: The following pages showcase a small sample of products in the Triton global inventory. We stock a wide range of products for lease and sale in various conditions. Get in touch with your local Triton representative for more information.



CLASSIFICATION

For Sale: New

Available via Triton's global network of supply locations.

8ft Dry Container



FEATURES

- Manufactured with rust resistant corten steel
- Secure and weatherproof, with vents to allow airflow
- Incredibly versatile
- Ideal for smaller domestic applications such as the construction industry
- Superior paint systems
- Advance orders in your preferred color (minimum volume required)
- Great options including 80 micron floor coating, lock boxes, waist high door locking handles
- Triton's industry leading new production testing and inspection criteria ensures the highest quality container
- Minimize shipping costs by loading an 8' unit inside of a 10' unit
- Moved from factory to most major ports in the world
- Backed up by Triton's global network of supply locations and dedicated sales and support teams
- Available globally



— 2,438 mm —



— 2,200 mm —

CONTAINER ROOF

— 2,200 mm —



CONTAINER FRONT

— 2,438 mm —



CONTAINER SIDE

— 2,200 mm —



CONTAINER REAR

DIMENSIONS (METRIC/IMPERIAL)

EXTERNAL DIMENSIONS

Length	2,200 mm	7' 2.6"
Width	2,438 mm	8' 0.0"
Height	2,260 mm	7' 5.0"

INTERNAL DIMENSIONS

Length	2,112 mm	6' 11.1"
Width	2,287 mm	7' 6.0"
Height	2,062 mm	6' 9.2"

DOOR OPENING

Width	2,106 mm	6' 10.9"
Height	1,949 mm	6' 4.7"

CAPACITY & WEIGHTS

Inside Cubic Capacity	9.96 m ³	351.7 ft ³
Max Gross	6,000 kg	13,230 lbs
Payload	5,150 kg	11,350 lbs
Tare	850 kg	1,880 lbs

NOTE: The dimensions and door openings of all containers correspond to ISO standards. However, due to production tolerances, a difference in measurement is possible.

DISCLAIMER: Every effort is made to ensure this information is accurate, however Triton does not assume any liability for the accuracy of the information and content provided in marketing or information materials, or for the consequences resulting from using the information and content provided. Triton does not guarantee or claim that said information and content is exhaustive. Claims as to the exhaustive nature of said information and content are excluded. The information and content is only provided for advertising purposes and is non-binding. No explicit or implied warranties or guarantees are made. The container displayed only represents a sample of the entire fleet.

The following items are registered or unregistered service marks in the United States and/or foreign jurisdictions pursuant to applicable intellectual property law and are the property of Triton International Limited and its subsidiaries: Triton® and TAL®.



CLASSIFICATION

For Sale: New

Available via Triton's global network of supply locations.

10ft Dry Container



FEATURES

- Manufactured with rust resistant corten steel
- Secure and weatherproof, with vents to allow airflow
- Superior paint systems
- Incredibly versatile and suitable for customers to modify into a wide range of applications
- Advance orders in your preferred color (minimum volume required)
- Ideal for smaller domestic applications such as the construction industry
- Great options including 80 micron floor coating, lock boxes, waist high door locking handles
- Triton's industry leading new production testing and inspection criteria ensures the highest quality container
- Shipping costs can be minimized by loading 2x10' units joined together (using approved ISO certification method)
- Moved from factory to most major ports in the world
- Backed up by Triton's global network of supply locations and dedicated sales and support teams
- Available globally



CONTAINER ROOF



CONTAINER FRONT

CONTAINER SIDE

CONTAINER REAR

DIMENSIONS (METRIC/IMPERIAL)

EXTERNAL DIMENSIONS

Length	2,991 mm	9' 9.8"
Width	2,438 mm	8' 0.0"
Height	2,591 mm	8' 6.0"

INTERNAL DIMENSIONS

Length	2,831 mm	9' 3.5"
Width	2,352 mm	7' 8.6"
Height	2,393 mm	7' 10.2"

DOOR OPENING

Width	2,338 mm	7' 8.0"
Height	2,280 mm	7' 5.8"

CAPACITY & WEIGHTS

Inside Cubic Capacity	15.9 m ³	563 ft ³
Max Gross	10,160 kg	22,400 lbs
Payload	8,960 kg	19,755 lbs
Tare	1,200 kg	2,645 lbs

NOTE: The dimensions and door openings of all containers correspond to ISO standards. However, due to production tolerances, a difference in measurement is possible.

DISCLAIMER: Every effort is made to ensure this information is accurate, however Triton does not assume any liability for the accuracy of the information and content provided in marketing or information materials, or for the consequences resulting from using the information and content provided. Triton does not guarantee or claim that said information and content is exhaustive. Claims as to the exhaustive nature of said information and content are excluded. The information and content is only provided for advertising purposes and is non-binding. No explicit or implied warranties or guarantees are made. The container displayed only represents a sample of the entire fleet.

The following items are registered or unregistered service marks in the United States and/or foreign jurisdictions pursuant to applicable intellectual property law and are the property of Triton International Limited and its subsidiaries: Triton® and TAL®.



CLASSIFICATION

For Sale: Used

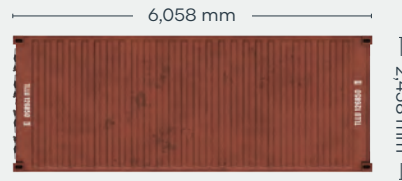
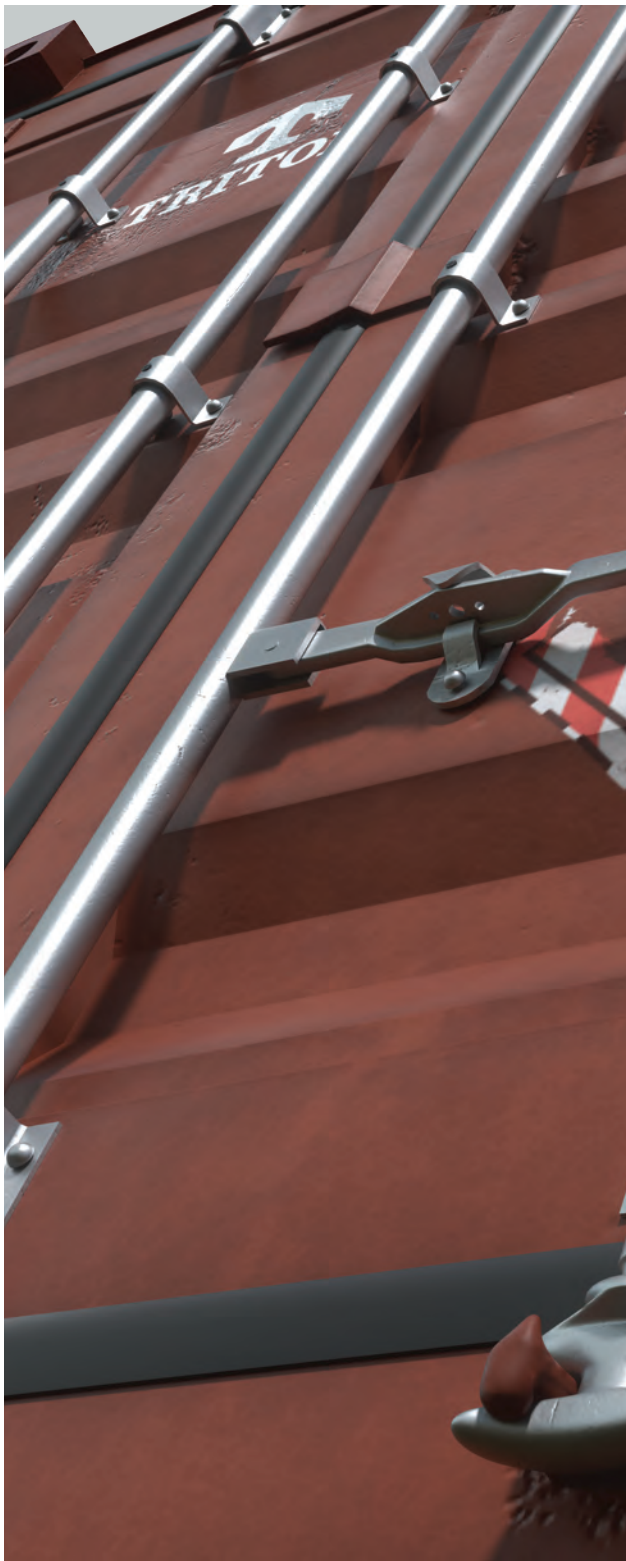
Available via Triton's global network of supply locations.

20ft Used Dry Container



FEATURES

- Available in a range of conditions to suit all needs, from cargo transportation to secure domestic storage
- Generally 11-15 years old when retired from service
- Constructed from rugged corten steel
- Durable and secure, with vents to allow airflow
- Resistant to damage and corrosion
- A variety of options available
- Incredibly versatile and suitable for customers to modify into a wide range of applications
- Available globally
- Backed up by Triton's global network of supply locations and dedicated sales and support teams
- Also available for Direct Delivery to buyer's facilities, providing significant cost savings on transport



CONTAINER ROOF



CONTAINER FRONT

CONTAINER SIDE

CONTAINER REAR

DIMENSIONS (METRIC/IMPERIAL)

EXTERNAL DIMENSIONS

Length	6,058 mm	19' 10.5"
Width	2,438 mm	8' 0.0"
Height	2,591 mm	8' 6.0"

INTERNAL DIMENSIONS

Length	5,898 mm	19' 4.2"
Width	2,352 mm	7' 8.6"
Height	2,393 mm	7' 10.2"

DOOR OPENING

Width	2,340 mm	7' 8.1"
Height	2,280 mm	7' 5.8"

CAPACITY & WEIGHTS

Inside Cubic Capacity	33.2 m ³	1172 ft ³
Max Gross	30,480 kg	67,200 lbs
Payload	28,090–28,580 kg	61,931–63,011 lbs
Tare	1,900–2,390 kg	4,189–5,269 lbs

NOTE: The dimensions and door openings of all containers correspond to ISO standards. However, due to production tolerances, a difference in measurement is possible.

DISCLAIMER: Every effort is made to ensure this information is accurate, however Triton does not assume any liability for the accuracy of the information and content provided in marketing or information materials, or for the consequences resulting from using the information and content provided. Triton does not guarantee or claim that said information and content is exhaustive. Claims as to the exhaustive nature of said information and content are excluded. The information and content is only provided for advertising purposes and is non-binding. No explicit or implied warranties or guarantees are made. The container displayed only represents a sample of the entire fleet.

The following items are registered or unregistered service marks in the United States and/or foreign jurisdictions pursuant to applicable intellectual property law and are the property of Triton International Limited and its subsidiaries: Triton® and TAL®.



CLASSIFICATION

Lease

Available via Triton's global network of supply locations.

40ft High Cube Dry Container



FEATURES

- Additional height provides extra internal cubic capacity, which means greater interior stacking capacity for your goods
- Manufactured with rust resistant corten steel
- Superior paint systems
- Resistant to damage and corrosion
- Secure and weatherproof, with vents to allow airflow
- Incredibly versatile
- Triton's industry leading new production testing and inspection criteria ensures the highest quality container
- Backed up by Triton's global network of supply locations and dedicated leasing and support teams
- Available globally
- IICL-6 repair criteria saves cost at off-hire
- Damage Protection Plan available to reduce costs and time at off-hire
- Flexible lease terms to meet your company needs



CONTAINER ROOF



CONTAINER FRONT

CONTAINER SIDE

CONTAINER REAR

DIMENSIONS (METRIC/IMPERIAL)

EXTERNAL DIMENSIONS

Length	12,192 mm	40' 0.0"
Width	2,438 mm	8' 0.0"
Height	2,896 mm	9' 6.0"

INTERNAL DIMENSIONS

Length	12,032 mm	39' 5.7"
Width	2,352 mm	7' 8.6"
Height	2,698 mm	8' 10.2"

DOOR OPENING

Width	2,340 mm	7' 8.1"
Height	2,585 mm	8' 5.8"

CAPACITY & WEIGHTS

Inside Cubic Capacity	76.4 m ³	2,700 ft ³
Max Gross	32,500 kg	71,650 lbs
Payload	28,800 kg	63,490 lbs
Tare	3,700 kg	8,160 lbs

NOTE: The dimensions and door openings of all containers correspond to ISO standards. However, due to production tolerances, a difference in measurement is possible.

DISCLAIMER: Every effort is made to ensure this information is accurate, however Triton does not assume any liability for the accuracy of the information and content provided in marketing or information materials, or for the consequences resulting from using the information and content provided. Triton does not guarantee or claim that said information and content is exhaustive. Claims as to the exhaustive nature of said information and content are excluded. The information and content is only provided for advertising purposes and is non-binding. No explicit or implied warranties or guarantees are made. The container displayed only represents a sample of the entire fleet.

The following items are registered or unregistered service marks in the United States and/or foreign jurisdictions pursuant to applicable intellectual property law and are the property of Triton International Limited and its subsidiaries: Triton® and TAL®.



CLASSIFICATION

For Sale: Used

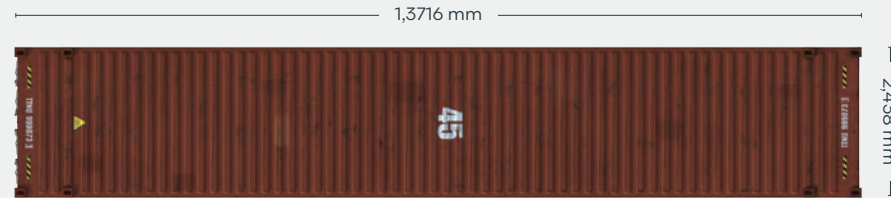
Available via Triton's global network of supply locations.

45ft Used High Cube Dry Container



FEATURES

- Available in a range of conditions to suit all needs, from cargo transportation to secure domestic storage
- Generally 11-15 years old when retired from service
- Constructed from rugged corten steel
- Additional height provides extra internal cubic capacity, which means greater interior stacking capacity for your goods
- Durable and secure, with vents to allow airflow
- Resistant to damage and corrosion
- Superior paint systems
- A variety of options available
- Incredibly versatile and suitable for customers to modify into a wide range of applications
- Available globally
- Backed up by Triton's global network of supply locations and dedicated sales and support teams
- Also available for Direct Delivery to buyer's facilities, providing significant cost savings on transport



CONTAINER ROOF



CONTAINER FRONT

CONTAINER SIDE

CONTAINER REAR

DIMENSIONS (METRIC/IMPERIAL)

EXTERNAL DIMENSIONS

Length	13,716 mm	45' 0.0"
Width	2,438 mm	8' 0.0"
Height	2,896 mm	9' 6.0"

INTERNAL DIMENSIONS

Length	13,556 mm	44' 5.7"
Width	2,352 mm	7' 8.6"
Height	2,698 mm	8' 10.2"

DOOR OPENING

Width	2,340 mm	7' 8.1"
Height	2,585 mm	8' 5.8"

CAPACITY & WEIGHTS

Inside Cubic Capacity	86.0 m ³	3040 ft ³
Max Gross	30,480–32,500 kg	67,200–71,650 lbs
Payload	25,270–27,900 kg	55,714–61,510 lbs
Tare	4,600 kg–5,210 kg	10,140–11,486 lbs

NOTE: The dimensions and door openings of all containers correspond to ISO standards. However, due to production tolerances, a difference in measurement is possible.

DISCLAIMER: Every effort is made to ensure this information is accurate, however Triton does not assume any liability for the accuracy of the information and content provided in marketing or information materials, or for the consequences resulting from using the information and content provided. Triton does not guarantee or claim that said information and content is exhaustive. Claims as to the exhaustive nature of said information and content are excluded. The information and content is only provided for advertising purposes and is non-binding. No explicit or implied warranties or guarantees are made. The container displayed only represents a sample of the entire fleet.

The following items are registered or unregistered service marks in the United States and/or foreign jurisdictions pursuant to applicable intellectual property law and are the property of Triton International Limited and its subsidiaries: Triton® and TAL®.



CLASSIFICATION

For Sale: New

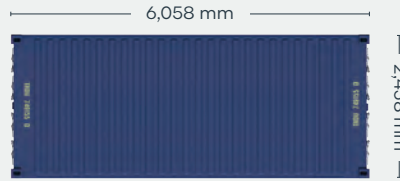
Available via Triton's global network of supply locations.

20ft Double Door Dry Container



FEATURES

- Cargo doors on both ends provide easy access for stocking and retrieving stored goods
- Manufactured with rust resistant corten steel
- Secure and weatherproof, with vents to allow airflow
- Superior paint systems
- Resistant to damage and corrosion
- Advance orders in your preferred color (minimum volume required)
- Great options including 80 micron floor coating, lock boxes, waist high door locking handles
- Triton's industry leading new production testing and inspection criteria ensures the highest quality container
- Incredibly versatile and suitable for customers to modify into a wide range of applications
- Backed up by Triton's global network of supply locations and dedicated sales and support teams
- Moved from factory to most major ports in the world
- Available globally



CONTAINER ROOF



CONTAINER FRONT

CONTAINER SIDE

CONTAINER REAR

DIMENSIONS (METRIC/IMPERIAL)

EXTERNAL DIMENSIONS

Length	6,058 mm	19' 10.5"
Width	2,438 mm	8' 0.0"
Height	2,591 mm	8' 6.0"

INTERNAL DIMENSIONS

Length	5,844 mm	19' 2.1"
Width	2,352 mm	7' 8.6"
Height	2,393 mm	7' 10.2"

DOOR OPENING

Width	2,343 mm	7' 8.2"
Height	2,280 mm	7' 5.8"

CAPACITY & WEIGHTS

Inside Cubic Capacity	32.9 m ³	1162 ft ³
Max Gross	30,480 kg	67,200 lbs
Payload	28,280 kg	62,350 lbs
Tare	2,200 kg	4,850 lbs

NOTE: The dimensions and door openings of all containers correspond to ISO standards. However, due to production tolerances, a difference in measurement is possible.

DISCLAIMER: Every effort is made to ensure this information is accurate, however Triton does not assume any liability for the accuracy of the information and content provided in marketing or information materials, or for the consequences resulting from using the information and content provided. Triton does not guarantee or claim that said information and content is exhaustive. Claims as to the exhaustive nature of said information and content are excluded. The information and content is only provided for advertising purposes and is non-binding. No explicit or implied warranties or guarantees are made. The container displayed only represents a sample of the entire fleet.

The following items are registered or unregistered service marks in the United States and/or foreign jurisdictions pursuant to applicable intellectual property law and are the property of Triton International Limited and its subsidiaries: Triton® and TAL®.



CLASSIFICATION

For Sale: New

Available via Triton's global network of supply locations.

40ft Double Door Dry Container

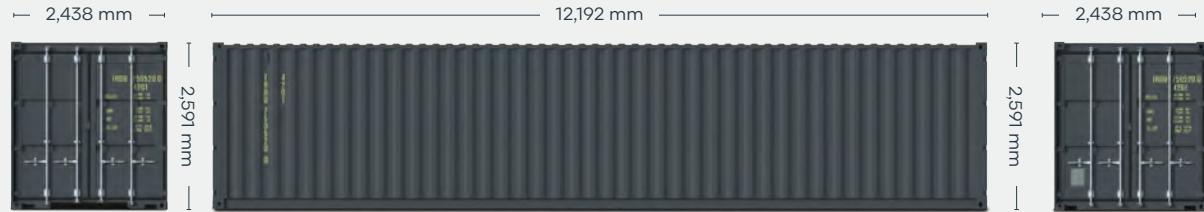


FEATURES

- Cargo doors on both ends provide easy access for stocking and retrieving stored goods
- Manufactured with rust resistant corten steel
- Secure and weatherproof, with vents to allow airflow
- Superior paint systems
- Resistant to damage and corrosion
- Advance orders in your preferred color (minimum volume required)
- Great options including 80 micron floor coating, lock boxes, waist high door locking handles
- Triton's industry leading new production testing and inspection criteria ensures the highest quality container
- Incredibly versatile and suitable for customers to modify into a wide range of applications
- Moved from factory to most major ports in the world
- Backed up by Triton's global network of supply locations and dedicated sales and support teams
- Available globally



CONTAINER ROOF



CONTAINER FRONT

CONTAINER SIDE

CONTAINER REAR

DIMENSIONS (METRIC/IMPERIAL)

EXTERNAL DIMENSIONS

Length	12,192 mm	40' 0.0"
Width	2,438 mm	8' 0.0"
Height	2,591 mm	8' 6.0"

INTERNAL DIMENSIONS

Length	11,978 mm	39' 3.6"
Width	2,352 mm	7' 8.6"
Height	2,393 mm	7' 10.2"

DOOR OPENING

Width	2,343 mm	7' 8.2"
Height	2,280 mm	7' 5.8"

CAPACITY & WEIGHTS

Inside Cubic Capacity	67.4 m ³	2380 ft ³
Max Gross	30,480 kg	67,200 lbs
Payload	26,900 kg	59,310 lbs
Tare	3,580 kg	7,890 lbs

NOTE: The dimensions and door openings of all containers correspond to ISO standards. However, due to production tolerances, a difference in measurement is possible.

DISCLAIMER: Every effort is made to ensure this information is accurate, however Triton does not assume any liability for the accuracy of the information and content provided in marketing or information materials, or for the consequences resulting from using the information and content provided. Triton does not guarantee or claim that said information and content is exhaustive. Claims as to the exhaustive nature of said information and content are excluded. The information and content is only provided for advertising purposes and is non-binding. No explicit or implied warranties or guarantees are made. The container displayed only represents a sample of the entire fleet.

The following items are registered or unregistered service marks in the United States and/or foreign jurisdictions pursuant to applicable intellectual property law and are the property of Triton International Limited and its subsidiaries: Triton® and TAL®.



CLASSIFICATION

For Sale: New

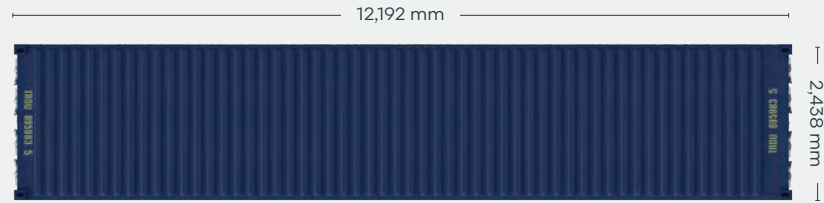
Available via Triton's global network of supply locations.

40ft High Cube Double Door Dry Container

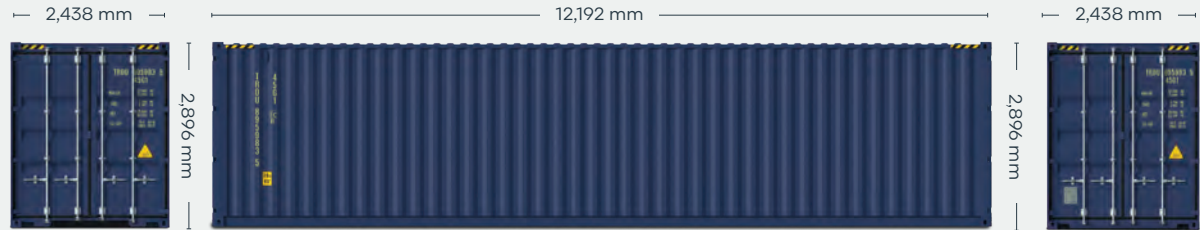


FEATURES

- Additional height provides extra internal cubic capacity, which means greater interior stacking capacity for your goods
- Cargo doors on both ends provide easy access for stocking and retrieving stored goods
- Manufactured with rust resistant corten steel
- Secure and weatherproof, with vents to allow airflow
- Resistant to damage and corrosion
- Great options including 80 micron floor coating, lock boxes, waist high door locking handles
- Superior paint systems
- Advance orders in your preferred color (minimum volume required)
- Triton's industry leading new production testing and inspection criteria ensures the highest quality container
- Moved from factory to most major ports in the world
- Incredibly versatile and suitable for customers to modify into a wide range of applications
- Backed up by Triton's global network of supply locations and dedicated sales and support teams
- Available globally



CONTAINER ROOF



CONTAINER FRONT

CONTAINER SIDE

CONTAINER REAR

DIMENSIONS (METRIC/IMPERIAL)

EXTERNAL DIMENSIONS

Length	12,192 mm	40' 0.0"
Width	2,438 mm	8' 0.0"
Height	2,896 mm	9' 6.0"

INTERNAL DIMENSIONS

Length	11,978 mm	39' 3.6"
Width	2,352 mm	7' 8.6"
Height	2,698 mm	8' 10.2"

DOOR OPENING

Width	2,343 mm	7' 8.2"
Height	2,585 mm	8' 5.7"

CAPACITY & WEIGHTS

Inside Cubic Capacity	76.0 m ³	2684 ft ³
Max Gross	30,480 kg	67,200 lbs
Payload	26,730 kg	58,930 lbs
Tare	3,750 kg	8,270 lbs

NOTE: The dimensions and door openings of all containers correspond to ISO standards. However, due to production tolerances, a difference in measurement is possible.

DISCLAIMER: Every effort is made to ensure this information is accurate, however Triton does not assume any liability for the accuracy of the information and content provided in marketing or information materials, or for the consequences resulting from using the information and content provided. Triton does not guarantee or claim that said information and content is exhaustive. Claims as to the exhaustive nature of said information and content are excluded. The information and content is only provided for advertising purposes and is non-binding. No explicit or implied warranties or guarantees are made. The container displayed only represents a sample of the entire fleet.

The following items are registered or unregistered service marks in the United States and/or foreign jurisdictions pursuant to applicable intellectual property law and are the property of Triton International Limited and its subsidiaries: Triton® and TAL®.



ISO Fluid Tank Container



CLASSIFICATION

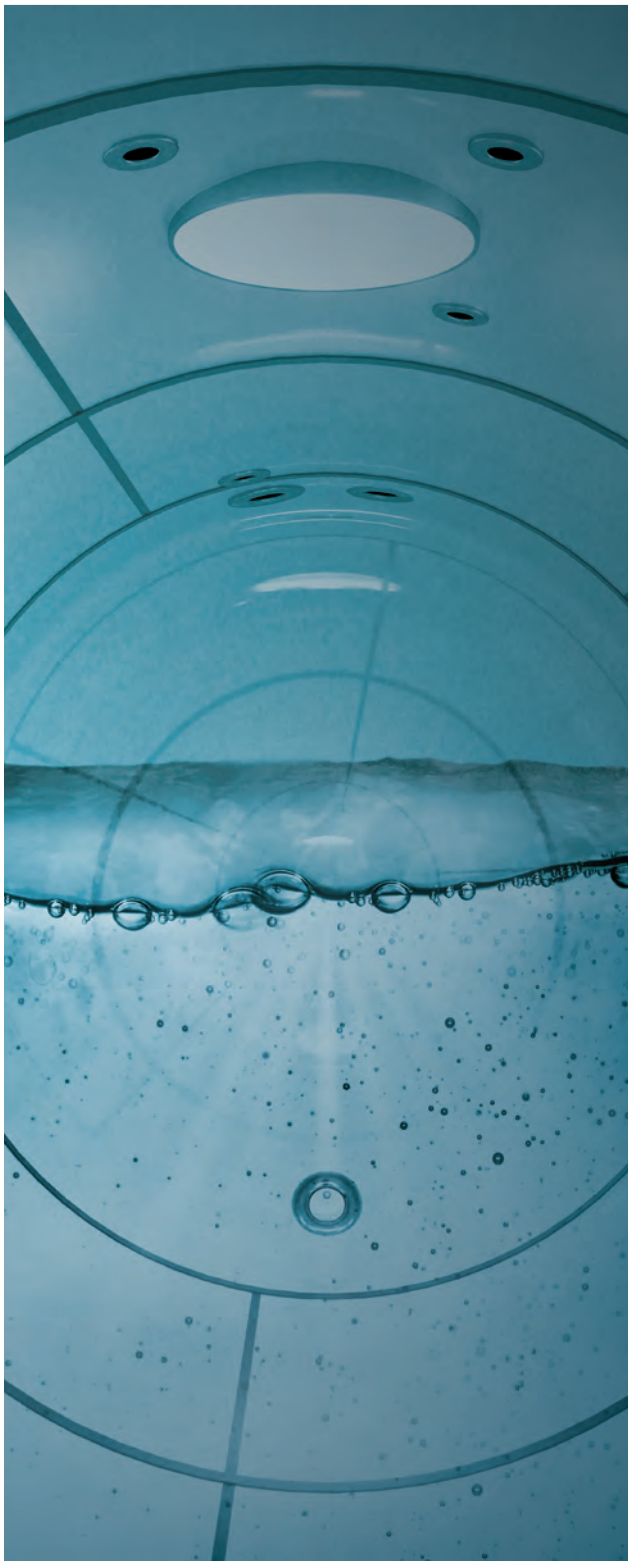
Lease

Available via Triton's global network of supply locations.



FEATURES

- UN portable tank: Type T11 and T14 available
- Capacities ranging from 21000l to 35000l
- Approved for ADR/RID/IMDG transportation
- Suitable for the carriage of most bulk liquids
- General specs include a high quality stainless steel tank barrel
- Full frame type design with B-style walkway
- Internationally recognized fittings
- Insulation with steam heating capability
- Rigorous quality control of our 3rd party production facilities
- Backed up by Triton's global network of supply locations and dedicated leasing and support teams
- Available globally
- Flexible lease terms to meet your company needs



TANK TOP



TANK FRONT

TANK SIDE

TANK REAR

DIMENSIONS (METRIC/IMPERIAL)

FRAME DIMENSIONS (20' Equivalent)

Length	6,058 mm	19' 10.5"
Width	2,438 mm	8' 0.0"
Height	2,591 mm	8' 6.0"

WEIGHT, PRESSURE & TEMPERATURE

Maximum Gross Weight	36,000 kg
Tare Weight	3,710 kg
Payload	32,290 kg
Maximum Allowable Working Pressure	4.00 bar
Design Temperature (frame & tank)	-40°C to +130°C

OPTIONS

AVAILABLE ISO TANKS T11 TYPES

20ft	21,000 litre
20ft	25,000 litre
20ft	26,000 litre

AVAILABLE NON-ISO T11 TYPES

7.82m Swap Body	35,000 litre
-----------------	--------------

NOTE: The dimensions and door openings of all containers correspond to ISO standards. However, due to production tolerances, a difference in measurement is possible.

DISCLAIMER: Every effort is made to ensure this information is accurate, however Triton does not assume any liability for the accuracy of the information and content provided in marketing or information materials, or for the consequences resulting from using the information and content provided. Triton does not guarantee or claim that said information and content is exhaustive. Claims as to the exhaustive nature of said information and content are excluded. The information and content is only provided for advertising purposes and is non-binding. No explicit or implied warranties or guarantees are made. The container displayed only represents a sample of the entire fleet.

The following items are registered or unregistered service marks in the United States and/or foreign jurisdictions pursuant to applicable intellectual property law and are the property of Triton International Limited and its subsidiaries: Triton® and TAL®.

HERE. THERE. EVERYWHERE

We supply the world

Triton is the largest lessor of intermodal containers in the world with over 7 million TEU of containers. Our services are available in 89 countries around the globe. So, no matter where you need containers, we'll have them nearby. To find your nearest Triton Container Sales manager visit www.tritoncontainer.com.



**Global inventory of
cargoworthy containers
for lease and sale.**



**Unrivalled container
supply at competitive
prices.**



**Outstanding and
highly responsive
customer services.**



**Global network of 20 offices
and 3 independent agencies
across 16 countries.**



**Equipment
built to the
highest quality.**



**Our size, strength and reliability
make us the go-to supplier of
intermodal shipping containers.**



TRITON

We're the biggest for a reason, contact our friendly experts and experience Triton's world-leading service and cost savings today. Imagine what we can do together.

www.tritoncontainer.com